

Established locally in 1982, REMONDIS Australia is part of one of the largest recycling, service and water companies in the world.

As a family-run company and a leader in the delivery of environmental solutions, REMONDIS Australia has over 900 employees and 550 vehicles operating from our advanced facilities across Australia.

As one of Australia's leading recycling and waste management companies, we leverage our local knowledge and global expertise to serve more than 24,000 industrial and commercial customers throughout the country.

By sharing our knowledge and expertise, diverting waste from landfills and supporting responsible waste management practices, we believe we can work together to bring our vision of a sustainable Australia closer to reality.

REMONDIS Australia
T 13 73 73
info@remondis.com.au
remondis-australia.com.au

Safety Rules

- Safety instructions must be followed at all times while on site. These rules are in place for the protection of all our visitors and staff. Whilst on site we ask that you:



Adhere to marked speed limits



Enclosed footwear must be worn



No smoking at any time



Children and pets must remain inside vehicles



Place waste in marked areas



Take care when unloading

- Before leaving the tipping area, the rear doors or boots of vehicles must be closed, and hoists lowered

Hand or manual unloading of waste (fenced side of pit)

Please ensure you follow the below instructions if manually unloading waste from your vehicle.



Follow instructions from staff



Stay within 1 metre of your vehicle

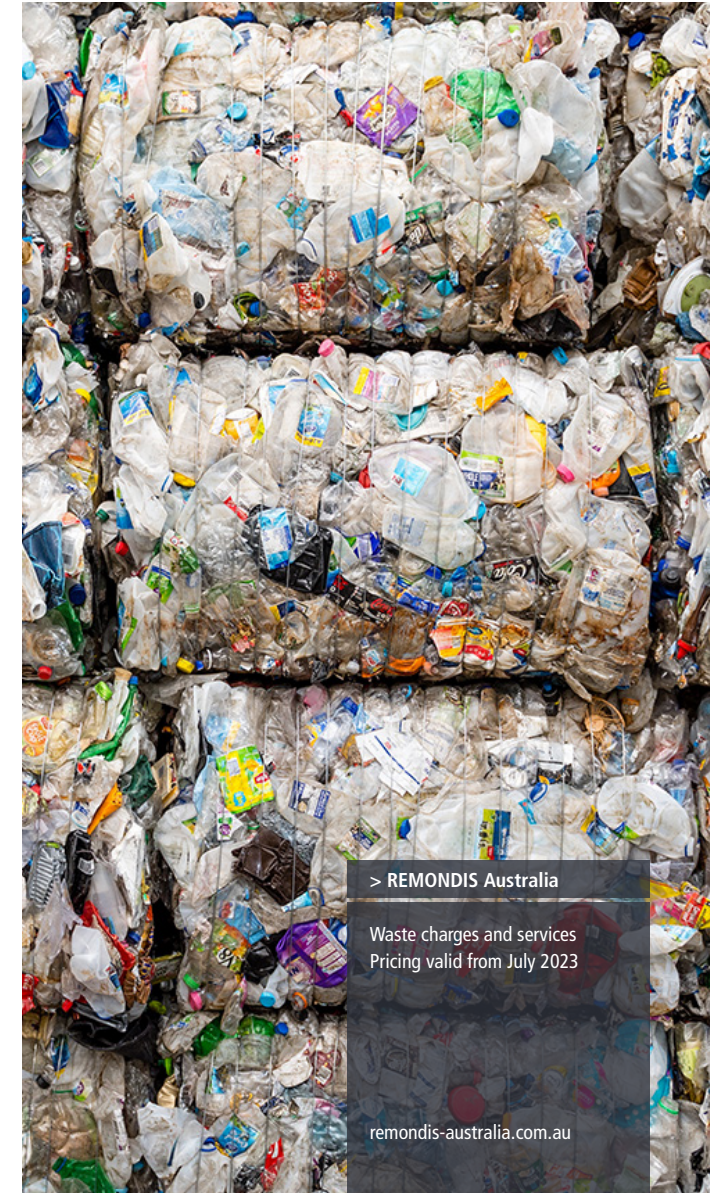


Do not climb or stand on vehicles



Keep a lookout for other vehicles

REMONDIS Picton Resource Recovery Facility



> REMONDIS Australia

Waste charges and services
Pricing valid from July 2023

remondis-australia.com.au

Waste charged by weight

Waste Type	\$/tonne	Minimum Charge
Putrescible waste [#]	\$444.00	\$89.00
Dry waste*	\$407.00	\$82.00
Bricks and concrete**	\$93.50	\$19.00
Garden organics ⁺	\$165.00	\$33.00

#Putrescible (wet) waste – This includes general waste with wet or organic components, including food waste.

***Dry waste** – This includes household junk, furniture, mixed materials including plastic, glass, metal, timber and other materials. Loads must not contain food waste, liquid waste, asbestos or hazardous materials.

****Bricks and concrete** – Materials must be clean / uncontaminated and includes bricks, concrete, roof tiles and terracotta pipes only. Loads containing other materials will be charged as **Dry waste**.

+Garden organics – Must be pre-sorted from mixed waste and includes small tree branches, grass and tree clippings and weeds with minimal soil. Tree branches must be less than 1 metre in length and 15cm in diameter. Loads that are not pre-sorted or contain materials such as untreated timber, palm trees, large branches, tree trunks, bamboo, bricks, or metal will be charged as **Dry waste**.

^Expanded plastics – Such as styrofoam and polystyrene. This charge applies when load contains >25% of this material by volume.

Waste charged by item

Waste Type	Pricing	
Single mattress	\$77.00	
Other / ensemble mattress	\$110.00	
Tyres	Motorcycle	\$49.50 each
	Passenger car	\$77.00 each
	Light truck / 4WD	\$89.00 each
	Tractor	\$335.50 each
TVs and monitors [#]	FREE	
Paper and cardboard ⁺⁺	FREE	
E-waste [#]	FREE	
Scrap metal	FREE	



++Paper and cardboard – Includes clean newspapers and printing paper, hard and soft cover books and cardboard. Must not contain plastic packaging, or food scraps.



#E-waste – Televisions, monitors, computers, computer peripherals, printers, scanners, modems, phones and stereos from residents and small businesses.

Terms & Conditions

- Please declare all wastes and recyclable materials on arrival at the weighbridge
- All vehicles are weighed in and out to calculate the net weight disposed. Weight is rounded to the nearest 20kg
- Prices are determined according to the waste type. Please refer to the "Waste charged by weight" and "Waste charged by item" pricing tables for further information
- A minimum charge applies to all chargeable waste
- The Goods and Services Tax (GST), and if applicable the Section 88 Waste Levy are included in waste charges
- REMONDIS reserves the right to alter prices and accepted materials at any time

EFTPOS and credit cards (Visa and Mastercard only) are accepted. Cash and cheques are not accepted.

Customers with minimum transactions of \$500 per month may be eligible to open an account. For further information, please call 13 73 73.

Opening hours and contact info

For more information please contact 13 73 73 or email customer.service@remondis.com.au

Opening Hours:

Monday to Friday: 7am – 3:30pm

Saturday, Sunday and Public Holidays: Closed

Opening hours subject to change